

***Morsetti fresabili  
Top jaws blanks  
Aufsatzbackenrohlinge  
Mors doux rapportés***

**Dati tecnici**

- Materiale: acciaio  
alluminio ad alta resistenza

**Technical data**

- Material: steel  
high-tensile hard-coated aluminium

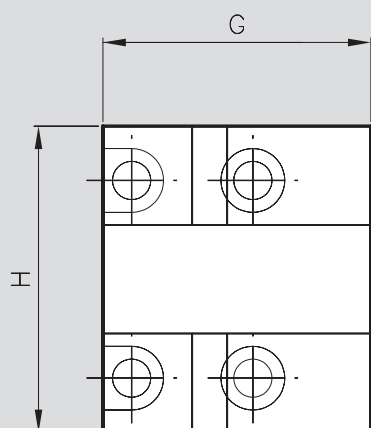
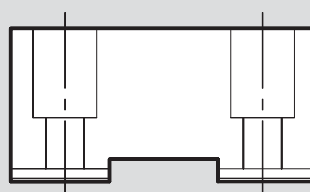
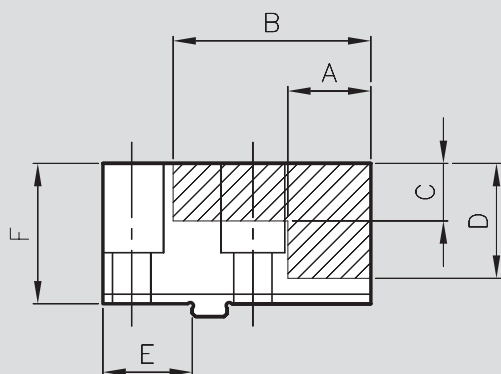
**Technische Daten**

- Werkstoff: Härtbar  
Aluminium hartbeschichtet

**Données techniques**

- Matière: acier  
aluminium haute résistance

**Morsetti fresabili**  
**Top jaws blanks**  
**Aufsatzbackenrohlinge**  
**Mors doux rapportés**

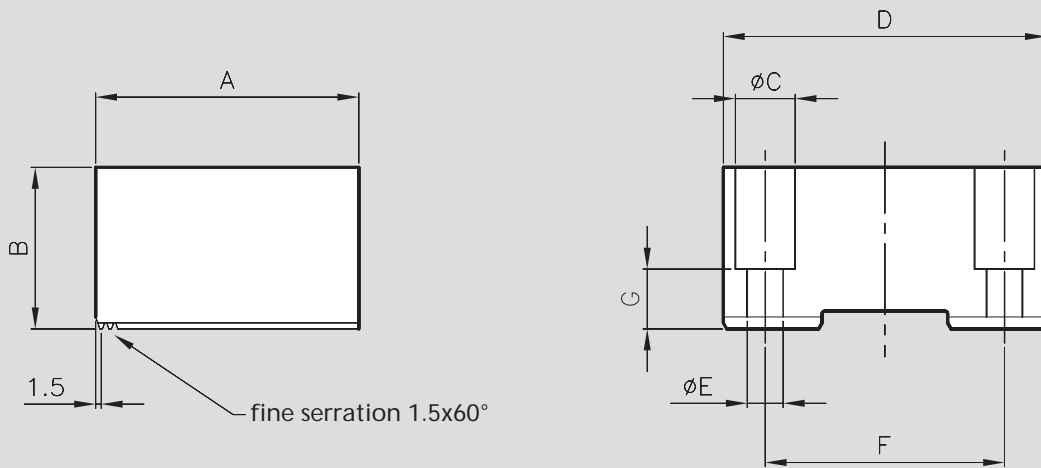


MATERIALE: 18 Ni Cr Mo 5, temprabile  
MATERIAL: 18 Ni Cr Mo 5, hardenable  
WERKSTOFF: 18 Ni Cr Mo 5, härtbar

VERSIONE: fori e sede testa per vite  
VERSION: bored and conter sunk for screw  
AUSFÜHRUNG: gebort und gesenkt für Befestigungsschrauben

Type	N° ident.	Suitable for	A	B	C	D	E	F	G	H	Total clamping range mm
66	MH-CFB 66	CFB 66	5	18.5	4	11	14	16	31	34	0-40
100	MH-CFB100	CFB100	14	35	9	18	16	25	47	55	0-70
160	MH-CFB160	CFB160	28	56	19	30	24	40	76	80	0-120
200	MH-CFB200	CFB200	28.5	65.5	21	32	45	45	98.5	106	0-150
250	MH-CFB250	CFB250	36	80	21	35	54	50	120	125	0-170

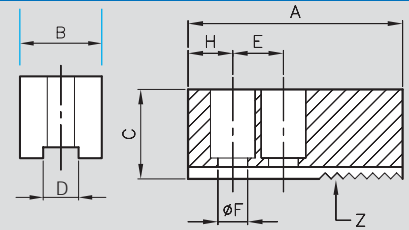
**Morsetti fresabili**  
**Top jaws blanks**  
**Aufsatzbackenrohlinge**  
**Mors doux rapportés**



MATERIALE: 18 Ni Cr Mo 5, temprabile  
MATERIAL: 18 Ni Cr Mo 5, hardenable  
WERKSTOFF: 18 Ni Cr Mo 5, härtbar

VERSIONE: morbide, senza fori  
VERSION: soft, without bore holes  
AUSFÜHRUNG: weich, ungebort

Type	N° ident.	Suitable for	A	B	C	D	E	F	G
66	MT-CFB 66	CFB 66	28.5	20	8	34	4.5	24	7
100	MT-CPF100	CPF100	42	25	11	55	6.6	35	9
160	MT-CPF160	CPF160	66	40	15	80	9	60	12
200	MT-CPF200	CPF200	87	45	15	106	9	74	15
250	MT-CPF250	CPF250	108	50	18	125	11	90	18

**Materiale: Acciaio Fe510**
**Material: Steel Fe510**


Chuck	Rif. N	A	B	C	D <sub>H7</sub>	E	ØF	H	Z
MPAF 135	C101902	55	30	40	10	16	9	10	1/16"x90°
MPAF 155	C101001	60	30	30	12	16	9	15	1/16"x90°
MPAF 155	C101001C040	60	30	40	12	16	9	15	1/16"x90°
MPAF 200	C101002	70	35	35	14	16.5	11	16	1/16"x90°
MPAF 200	C101002C060	70	35	60	14	16.5	11	16	1/16"x90°
MPAF 280	C101004	90	40	40	17	23	13	20	1/16"x90°
MPAF 280	C101004C060	90	40	60	17	23	13	20	1/16"x90°
MPAF 310	C101006	110	50	50	21	30	17	20	1/16"x90°
MPAF 310	C101006C080	110	50	80	21	30	17	20	1/16"x90°
MPAF 310	C101008	125	50	50	21	30	17	22	1/16"x90°
MPAF 310	C101008C080	125	50	80	21	30	17	22	1/16"x90°
MPAF380	C101014	140	60	60	21	34	17	25	1/16"x90°
MPAF 380	C101014C080	140	60	80	21	34	17	25	1/16"x90°
<b>Separator</b>									
MPAF 450	C101015	140	60	60	25.5	38	21	27	3/32"x90°
MPAF 450	C101015C080	140	60	80	25.5	38	21	27	3/32"x90°

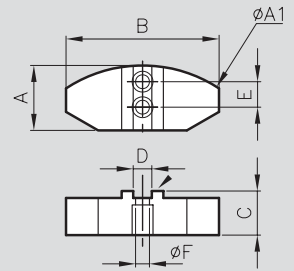
**Materiale: Acciaio C40**
**Material: Steel C40**

Chuck	Rif. N	A	B	C	D <sub>H7</sub>	E	ØF	H	Z
MPAF 155	B101001	60	30	30	12	16	9	15	1/16"x90°
MPAF 200	B101002	70	35	35	14	16.5	11	16	1/16"x90°
MPAF 200	B101003	80	40	40	14	20	11	18	1/16"x90°
MPAF 280	B101004	90	40	40	17	23	13	20	1/16"x90°
MPAF 310	B101005	105	40	40	21	30	17	20	1/16"x90°
MPAF 310	B101006	110	50	50	21	30	17	22	1/16"x90°
MPAF 310	B101008	125	50	50	21	30	17	22	1/16"x90°
MPAF 380	B1010014	140	60	60	21	34	17	25	1/16"x90°
<b>Separator</b>									
MPAF 450	B101018	160	80	80	25.5	38	21	25	3/32"x90°

**Materiale: Alluminio Ergal 7075**
**Material: high tensile hard coated aluminium Ergal 7075**

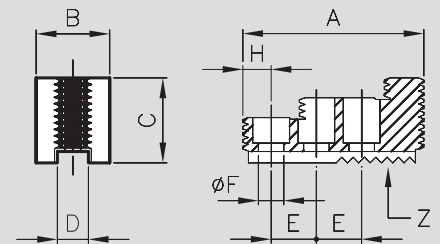
Chuck	Rif. N	A	B	C	D <sub>H17</sub>	E	ØF	H	Z
MPAF 155	A101001	60	30	30	12	16	9	15	1/16"x90°
MPAF 200	A101002	70	35	35	14	16.5	11	16	1/16"x90°
MPAF 200	A101003	80	40	40	14	20	11	18	1/16"x90°
MPAF 280	A101004	90	40	40	17	23	13	20	1/16"x90°
MPAF 280	A101005	105	40	40	17	23	13	20	1/16"x90°
MPAF 310	A101006	110	50	50	21	30	17	20	1/16"x90°
MPAF 310	A101008	125	50	50	21	30	17	22	1/16"x90°
MPAF 380	A1010014	140	60	60	21	34	17	25	1/16"x90°

**Materiale: Fe510**  
**Material: Fe510**



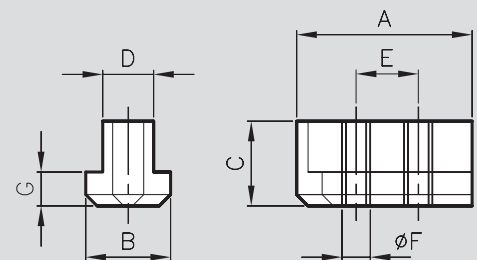
Chuck	Ref. N	Material	A	B	C	D	E	F	A1	Z
MPAF 155	FGC101001	Fe510	50	100	40	12	16	9	130	1/16"x90°
MPAF 200	FGC101002	Fe510	60	120	50	14	16.5	11	160	1/16"x90°
MPAF 280	FGC101004	Fe510	80	140	60	17	23	13	200	1/16"x90°
MPAF 310	FGC101006	Fe510	80	180	60	21	30	17	250	1/16"x90°
MPAF 310	FGC101008	Fe510	120	240	60	21	30	17	320	1/16"x90°
MPAF 380	FGC101014	Fe510	150	330	80	21	34	17	440	1/16"x90°
MPAF 450	FGC101016	Fe510	150	330	80	25.5	38	21	440	3/32"x90°

**Materiale: Acciaio 18NiCrMo5**  
**Material: Steel 18NiCrMo5**



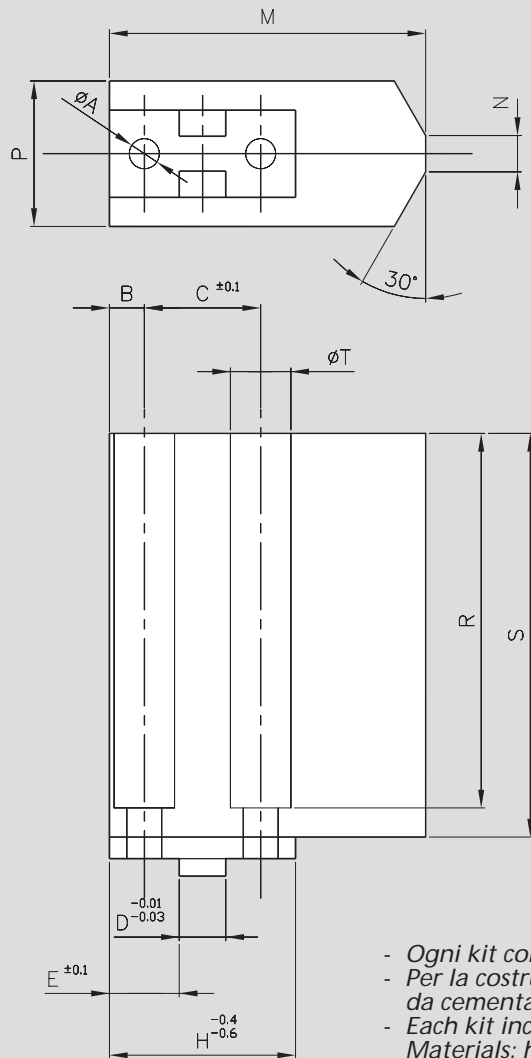
Chuck	Rif. N	A	B	C	D <sub>H7</sub>	E	ØF	H	Z
MPAF 200	D1002	65	34	39	14	16.5	11	14	1/16"x90°
MPAF 280	D1004	82	40	45	17	23	13	16.5	1/16"x90°
MPAF 310	D1006	105	45	56	21	30	17	18	1/16"x90°
MPAF 310	D1009	123	50	56	21	30	17	19	1/16"x90°
MPAF 380	D10014	120	55	73	21	34	17	22	1/16"x90°

**Materiale: Acciaio 39NiCrMo3**  
**Material: Steel 39NiCrMo3**

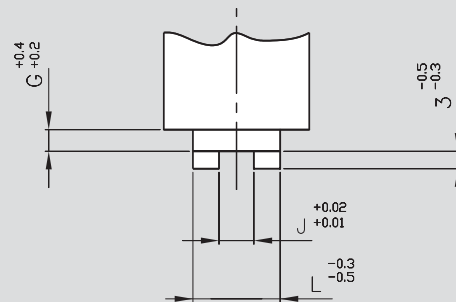


Chuck	Rif. N	A	B	C	D <sub>g6</sub>	E	ØF	G
MPAF 135	C1210202S	30	17	15	10	16	M8	6.5
MPAF 155	C1210202	30	17	15	12	16	M8	6.5
MPAF 200	C1210006	15	20	20	14	/	M10	7.5
MPAF 280	C1210206	41	22.5	22	17	23	M12	81
MPAF 310	C1210209	54	29	25	21	30	M16	11
MPAF 380	C1210012	25	29	25	21	/	M16	11
MPAF 450	C1210215	68	35	34	25.5	38	M20	15

## Morsetti fresabili Top jaws blanks Aufsatzbackenrohlinge Mors doux rapportés



TYPE	Valid for
GR-...- 64	OPP2-64/OPM 064/MAC3-64 MFB-85/MA4-75/MIA1-G2-20
GR-...- 80	OPP2-80/OPM 080/MAC3-80 MFB-110/MA4-95/MIA1-G2-25
GR-...-100	OPP2-100/OPM-100/MAC3-100 MFB-140/MA4-110/MIA1-G2-32
GR-...-125	OPP2-125/OPM-125/MAC3-125 MFB-170/MA4-145/MIA1-G2-40
GR-...-160	OPP2-160/OPM-160/MAC3-160 MFB-220/MA4-185/MIA1-G2-50
GR-...-180	OPP2-180/MIA1-G2-54
GR-...-200	OPP2-200/MAC3-200/MA4-230 MIA1-G2-60
GR-...-250	OPP2-250/MAC3-250/MIA1-G2-80
GR-...-320	OPP2-320/MIA1-G2-100



- Ogni kit comprende una griffe e n° 2 viti.
  - Per la costruzione è utilizzato alluminio ad alta resistenza oppure acciaio da cementazione temprabile
  - Each kit included one jaw and two screws
- Materials: high tensile aluminium alloy or cement steel

Tipo	A	B	C	D	E	G	H	J	L	M	N	P	R	S	T	Materiale	
																acciaio	alluminio
Type	A	B	C	D	E	G	H	J	L	M	N	P	R	S	T	steel	aluminium
Typ	A	B	C	D	E	G	H	J	L	M	N	P	R	S	T	Stahl	Aluminium
Type	A	B	C	D	E	G	H	J	L	M	N	P	R	S	T	Matière	
																acier	aluminium
GR ...64	4.5	4	13	5	9	5	21	4	11	32	3	20	59.5	64	8	GR-CC-64	GR-LL-64
GR ...80	5.5	5	16	6	10	7	25.5	5	13	41	4	22	74.5	80	10	GR-CC-80	GR-LL-80
GR ...100	6.5	6	20	8	12	8	32	6	15	51	5	30	94.5	100	11	GR-CC-100	GR-LL100
GR ...125	9	8.5	24	8	16.5	9	40.5	6	18	60	6	35	119.5	125	15	GR-CC-125	GR-LL-125
GR ...160	11	9	32	10	20	10	50	8	22	80	8	40	153.5	160	17	GR-CC-160	GR-LL-160
GR ...180	11	9.5	36	12	21.5	10	55	10	26	90	8	40	173	180	17	GR-CC-180	GR-LL-180
GR ...200	13	11	40	14	24	10	62	12	30	108	10	46	187	200	20	GR-CC-200	GR-LL-200
GR ...250	13	17	48	16	33	13	80	12	36	135	12	50	187	250	20	GR-CC-250	GR-LL-250
GR ...320	17	18	64	20	40	13	100	16	44	160	16	60	187	320	26	GR-CC-320	GR-LL-320