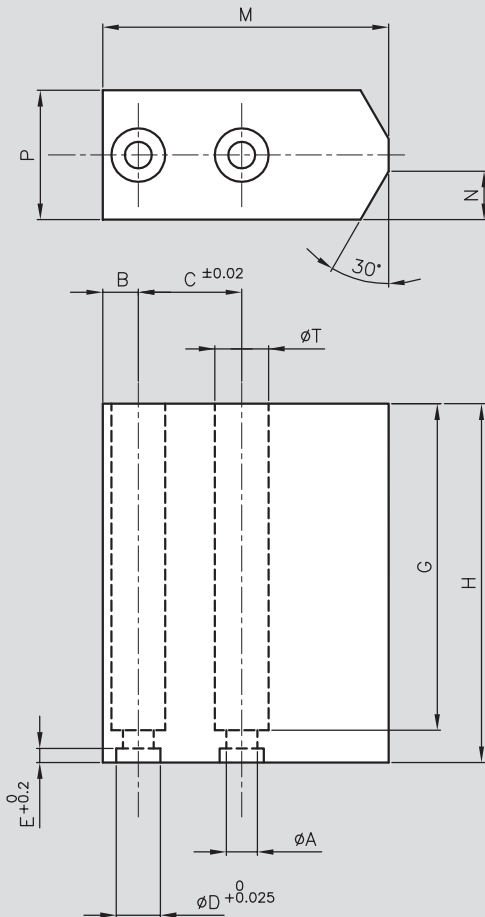


3-finger self centering gripper, pneumatic - series PZP 3-Finger-Zentrischgreifer, pneumatisch - Typ PZP

Intermediate Jaws / Zwischenbacke



Type Typ	Code Version
GS - ... 40	PZP 40
GS - ... 50	PZP 50
GS - ... 64	PZP 64
GS - ... 80	PZP 80
GS - ... 100	PZP 100
GS - ... 125	PZP 125
GS - ... 160	PZP 160
GS - ... 200	PZP 200
GS - ... 240	PZP 240
GS - ... 300	PZP 300

CC = Steel

LL = Aluminium

Each kit included one top jaw and two screws
Material: high tensile aluminium alloy

Jedes kit enthält eine Backe und zwei Schrauben
Materialien: hochfestes Aluminium

Type Typ	A	B	C	D	E	G	H	M	Aluminium		Steel		T	Code / Version		
									N	P	N	P		Steel Stahl	Aluminium Aluminium	
GS ...	40	2,7	4	8	4	2	36	40	22,2	4	10	4	10	5	GS-CC-40	GS-LL-40
GS ...	50	3,4	5	12	5	2	45,5	50	30	6,5	15	6,5	15	6	GS-CC-50	GS-LL-50
GS ...	64	4,5	5	13	6	2,5	59,5	64	32	8,5	20	8,5	20	8	GS-CC-64	GS-LL-64
GS ...	80	5,5	6	16	8	2,5	74,5	80	41	11,5	25	9	22	10	GS-CC-80	GS-LL-80
GS ...	100	6,6	7	20	10	3	94,5	100	51	12,5	30	12,5	30	11	GS-CC-100	GS-LL-100
GS ...	125	6,6	9,5	24	10	3	119,5	125	60	14,5	35	14,5	35	11	GS-CC-125	GS-LL-125
GS ...	160	11	10	32	14	4	151	160	80	16	40	16	40	18	GS-CC-160	GS-LL-160
GS ...	200	13	15	40	16	4	186	200	96	18	45	13,5	40	20	GS-CC-200	GS-LL-200
GS ...	240	13	15,5	44	16	4	204	220	109	20	50	20	50	20	GS-CC-240	GS-LL-240
GS ...	300	17,5	20	46	22	6	185	200	130	22	60	22	60	26	GS-CC-300	GS-LL-300

If the max. permitted finger weight is exceeded, it is imperative to throttle the air pressure so that the jaw movement occurs without any hitting or bouncing. Service life may be reduced.

Wenn der max. zulässigen Fingergewichtes überschritten wird, ist es unerlässlich, um den Luftdruck zu drosseln, so dass der Kieferbewegung erfolgt ohne schlag- und prell. Die Lebensdauer kann sich verringern.